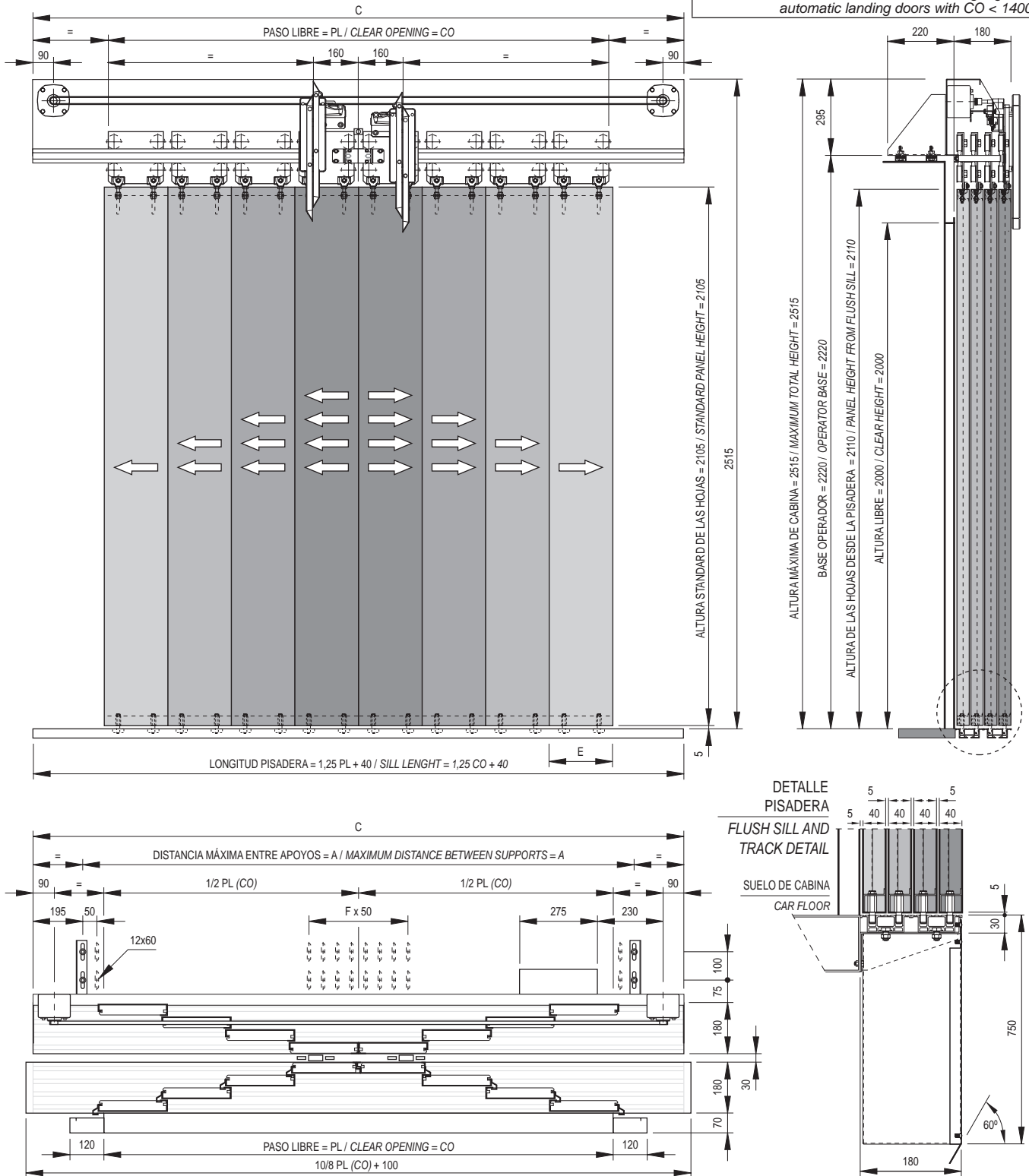


Este modelo no se encuentra disponible en configuración para puertas de rellano automáticas con $PL < 1400$ mm.
This model is not available working together with automatic landing doors with $CO < 1400$ mm.



		Dos Motores / Two Motors																
PL / CO		1400*	1500*	1600	1700	1800	1900	2000	2100	2200	2300	2400	2500	2600	2700	2800	2900	3000
A		1410	1535	1660	1785	1910	2035	2160	2285	2410	2535	2660	2785	2910	3035	3160	3285	3410
C		1800	1925	2050	2175	2300	2425	2550	2675	2800	2925	3050	3175	3300	3425	3350	3675	3800
E		195	207	220	232	245	257	270	282	295	307	320	332	345	357	370	382	395
F		3	4	4	5	5	6	6	7	7	8	8	9	9	10	10	10	11
TIEMPO / TIME (s)		1,73	1,8	1,87	1,94	2	2,06	2,12	2,18	2,24	2,29	2,35	2,4	2,45	2,5	2,55	2,6	2,65
PESO / WEIGHT (kg)		209	224	239	254	269	284	299	314	329	343,5	358,5	373,5	388	403	418	433	448

*: Consultar con nuestro departamento Técnico - To be consulted to our Technical department.

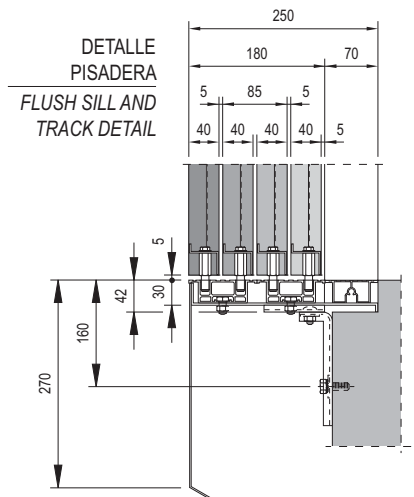
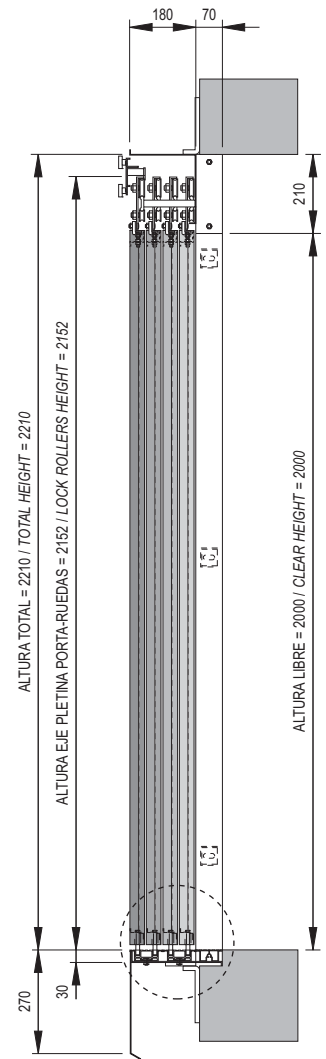
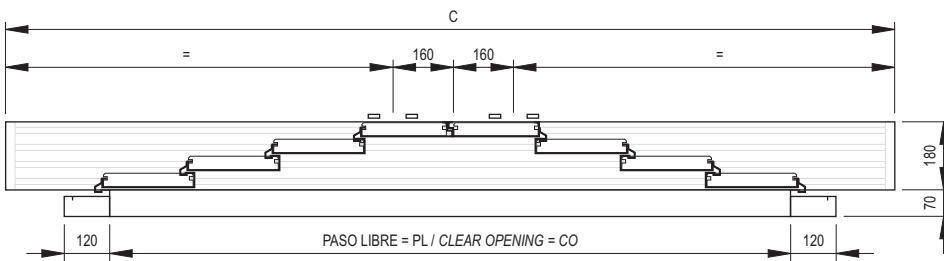
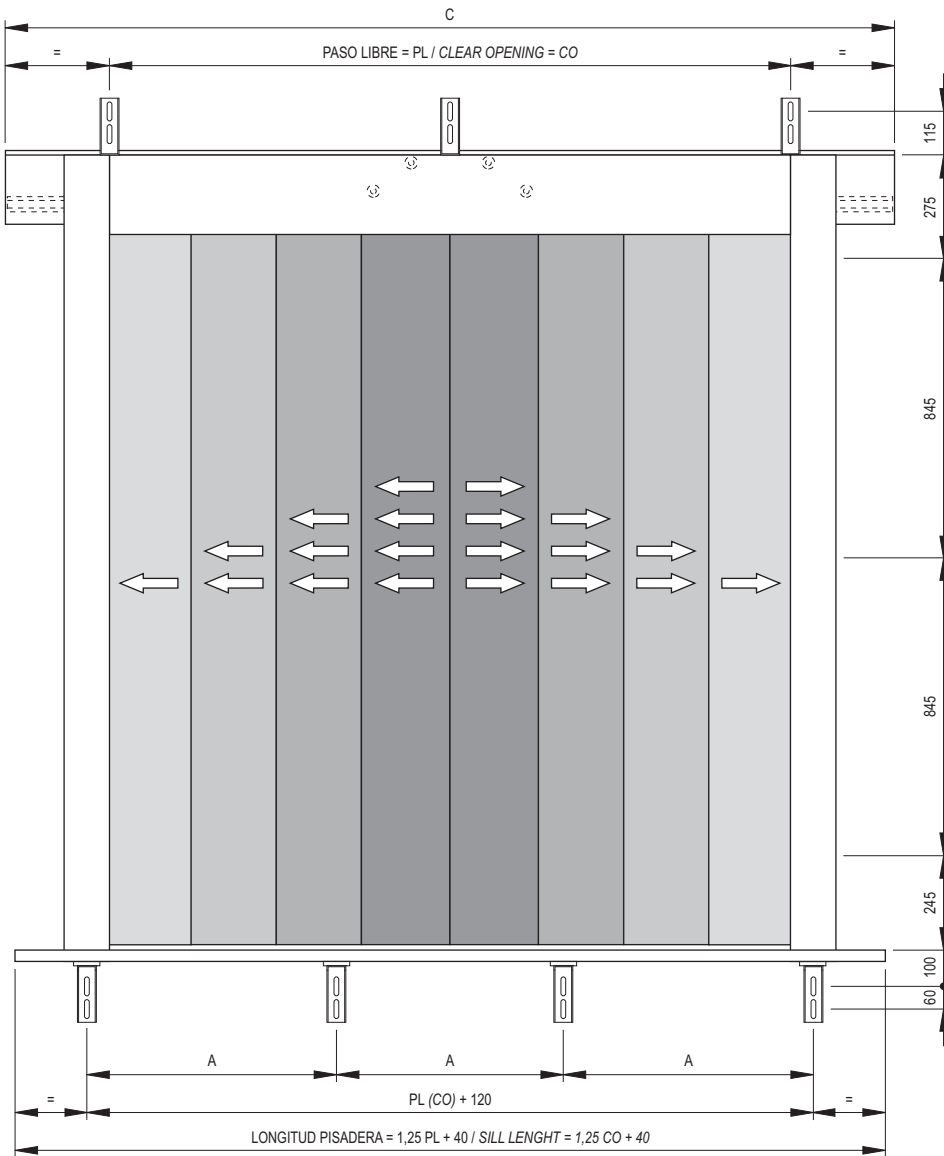
4.2.

PUERTA RELLANO CENTRAL 8 HOJAS 8 PANEL CENTRE PARTING LANDING DOOR

40/10

Fermator
AUTOMATIC DOORS FOR LIFTS

4

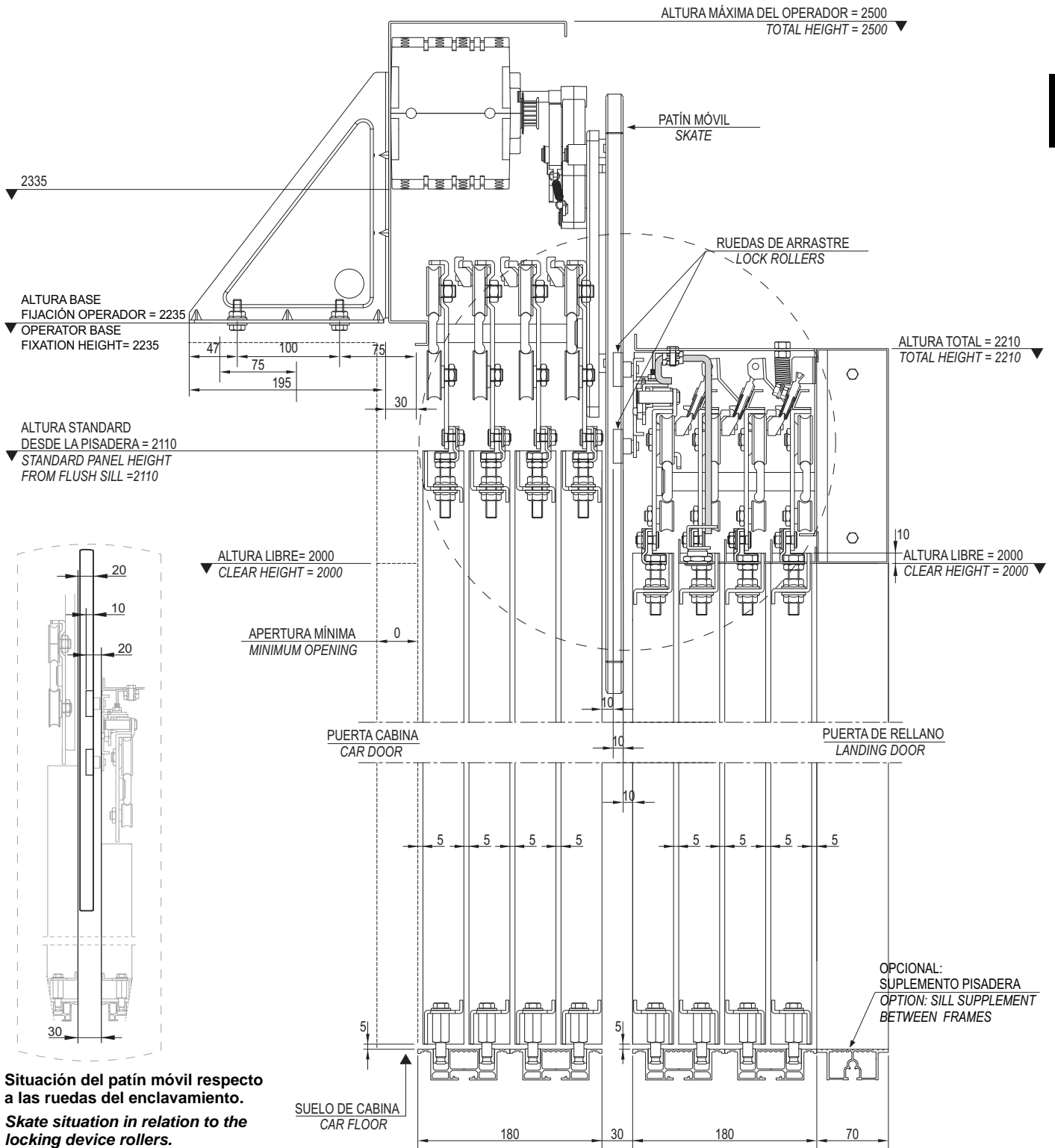


PL / CO	1400	1500	1600	1700	1800	1900	2000	2100	2200	2300	2400	2500	2600	2700	2800	2900	3000
A	380	324	344	364	384	404	353	370	387	403	360	374	340	352	365	377	390
C	1850	1975	2100	2225	2350	2475	2600	2725	2850	2975	3100	3225	3350	3475	3600	3725	3850
S	5	5	6	6	6	6	7	7	7	7	8	8	9	9	9	9	9
T	8	8	9	10	10	10	11	11	11	11	13	13	14	14	14	14	15

S: N° de soportes en apoyo pisadera.
S: Number of supports for sill support.

T: N° de soportes total.
T: Total number of supports.

Puerta rellano central 8 hojas modelo 40/10
8 panel centre parting landing door model 40/10



Situación del patín móvil respecto a las ruedas del enclavamiento.
Skate situation in relation to the locking device rollers.